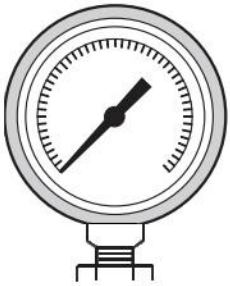


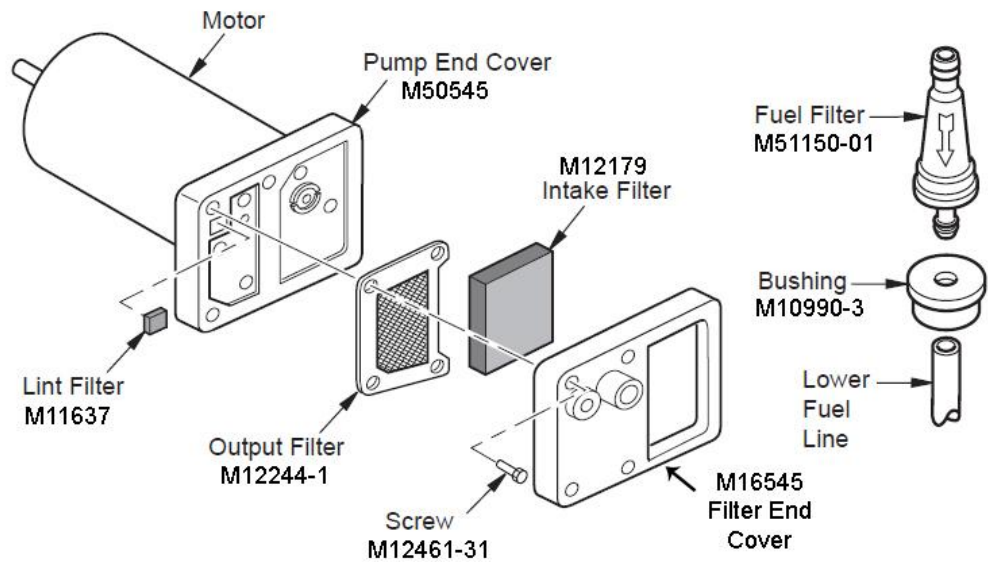
Filter Replacement Instructions

SpaceHeaterParts.com
586 Keldon Ct.
Valparaiso, In 46385
219-242-8778

PP214 Filter Kit



Optional G14490 Air Gauge, 0-15 PSI. This is for all low pressure oil fired heaters.



The PP214 filter kit includes one of each filter:

M11637 Lint Filter M12244-1 Output Filter M12179 Intake Filter M51150-01 Fuel Filter

SUGGESTED TOOLS:

5/16" Nut Driver 0-15 lbs Pressure Gauge (#G14490)

TO REPLACE OUTPUT, INTAKE, AND LINT FILTERS

1. Unplug heater.
2. Remove upper shell & plastic fan grill.
(If equipped)
3. Remove filter end cover.
4. Remove old intake, output, and lint filters.
5. Install new filters. Refer to illustration above
6. Install filter end cover.
7. Install plastic fan grill (if equipped) and upper shell.
8. Adjust pump pressure.

TO REPLACE FUEL FILTER

1. Unplug heater.
2. Remove side cover.
3. Disconnect upper fuel line from fuel filter.
4. Carefully pry bushing, fuel filter, and lower fuel line out of fuel tank.
5. Remove fuel filter.
6. Install new fuel filter onto lower fuel line and bushing.
7. Replace bushing, fuel filter, and lower fuel line into fuel tank.
8. Connect upper fuel line to fuel filter.
9. Install side cover.

⚠ WARNING ⚠

Never service heater while it is plugged in, operating or hot.
Severe burns and electrical shock can occur.