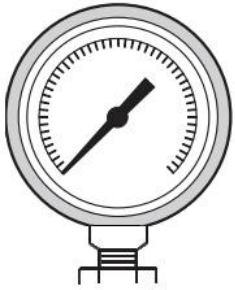


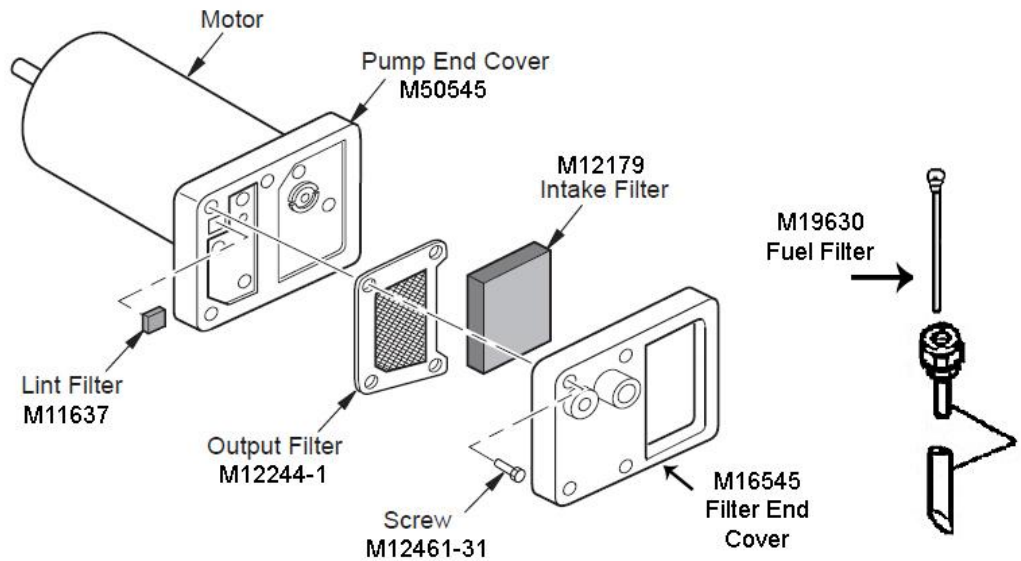
# Filter Replacement Instructions

SpaceHeaterParts.com  
586 Keldon Ct.  
Valparaiso, In 46385  
219-242-8778

## PP215 Filter Kit



Optional G14490 Air Gauge, 0-15 PSI. This is for all low pressure oil fired heaters.



### The PP215 filter kit includes one of each filter:

M11637 Lint Filter    M12244-1 Output Filter    M12179 Intake Filter    M19630 Fuel Filter

#### SUGGESTED TOOLS:

5/16" Nut Driver    0-15 lbs Pressure Gauge (#G14490)

#### TO REPLACE OUTPUT, INTAKE, AND LINT FILTERS

1. Unplug heater.
2. Remove upper shell & plastic fan grill. (If equipped)
3. Remove filter end cover.
4. Remove old intake, output, and lint filters.
5. Install new filters. Refer to illustration above

#### TO REPLACE FUEL FILTER

1. Unplug heater.
2. Remove top cover.
3. Disconnect fuel line from nozzle holder.
4. Slide fuel line down an inch.
5. Remove fuel filter.
6. Install new fuel filter into fuel line.
7. Connect fuel line to nozzle adapter.
8. Install top cover.

#### ⚠ WARNING ⚠

Never service heater while it is plugged in, operating or hot.  
Severe burns and electrical shock can occur.

*SpaceHeaterParts.com*  
**219-242-8778**